



Collaborative Learning Inc.™
COMPREHENSIVE CURRICULUM & INSTRUCTION IMPROVEMENT

Indiana State Mapping Initiative

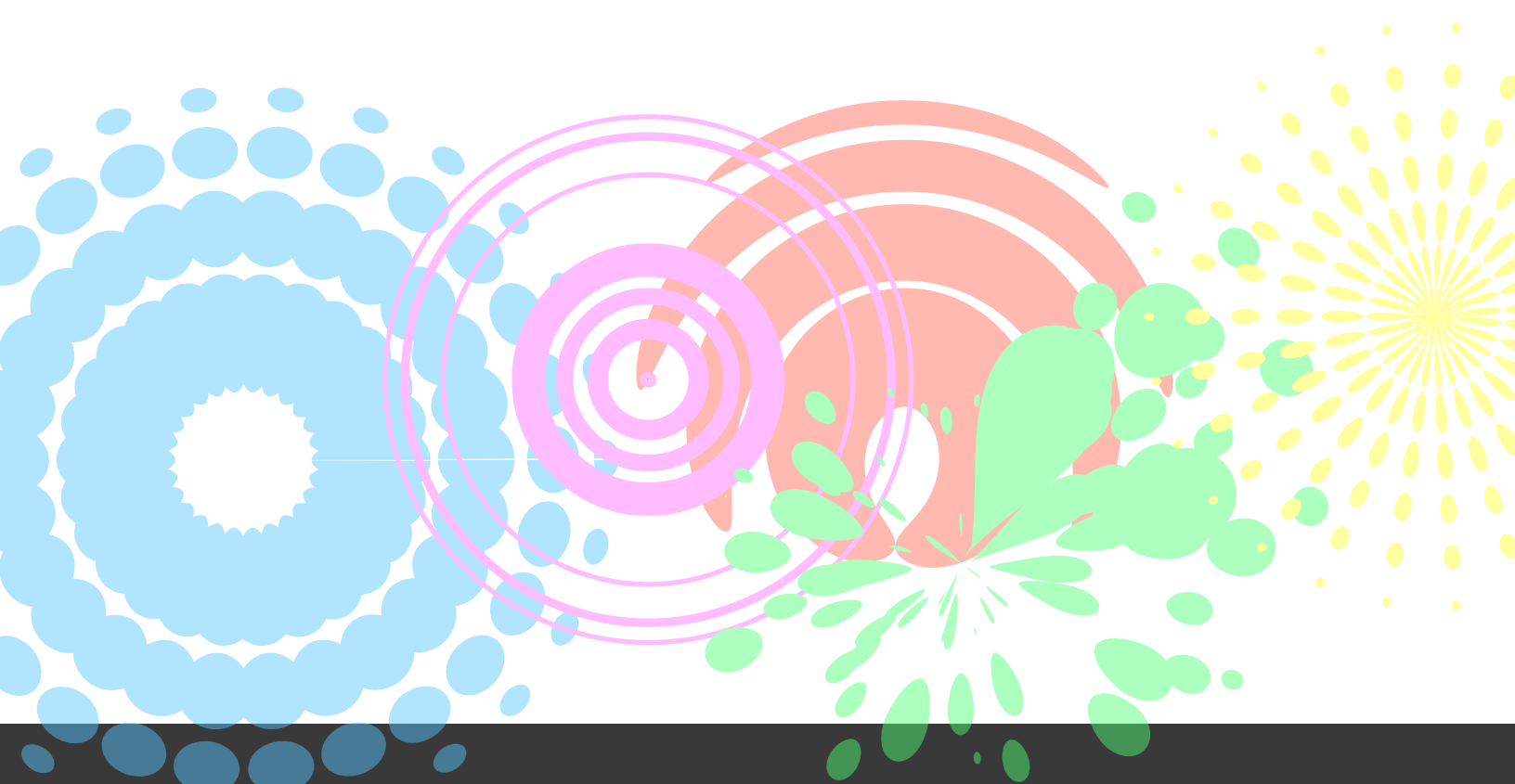
Your Toolkit for Alignment Success

Kristy Casiello | Vice President of Sales - Midwest

☎ 630.282.1635

🌐 www.clihome.com

✉ kristyc@clihome.com



Collaborative Learning Inc.

We are proud to be leaders in curriculum mapping, alignment, and refinement. As publishers of the first web-based mapping tool, we appreciate the Indiana State Mapping Initiative and what it means for students, teachers, and school leaders. Our program, used for years by over 12,000 Indiana educators, is the industry-leading solution that now combines instructional planning and standards-based reporting.

COLLABORATIVE LEARNING IS HERE TO HELP!

As someone with many years working for Collaborative Learning, I am excited about the opportunity to lead you in your curriculum improvement and alignment efforts. As Vice President of Sales Midwest Region, my mission is to provide your school with the best possible products and service.

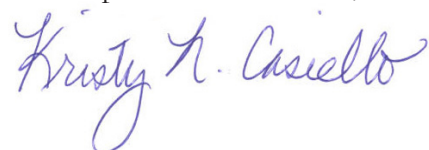
This summer, educators from across the state came together with a common goal of ensuring an excellent education for all students in Indiana. Through our partnership with the Curriculum Improvement Institute, our consultants were able to contribute to this goal by providing professional development on the curriculum mapping process and the creation of the Indiana State Curriculum Maps.

According to the Indiana Department of Education, discussions focused on how curricula gets enacted, as well as measuring student results based on what was taught, which are the most important parts of the curriculum mapping process.

How we can help: Collaborative Learning publishes the Curriculum Improvement Studio™, a suite of programs that enables schools to plan instruction, map and enrich curricula, and differentiate instruction. Using the state curriculum maps as a guideline, our products and services make using data to aid in decision making both natural and easy. I hope you will read through the Indiana State Packages on page 5 for details on integrating Indiana State Maps into your curriculum improvement process.

I am looking forward to talking with you, as well as working with you to move your staff through the refinement of your curriculum for the betterment of your students.

Your partner in education,



Vice President of Sales - Midwest Region

ABOUT OUR SOLUTIONS

Curriculum Improvement Studio is the next generation in data-driven curriculum improvement. This is the only solution that integrates teachers' daily and weekly instruction planning and practices into a system that can track what was planned, what was taught, and what was learned.

Productivity is increased by automating the entire process:

- Convenient web-based modules for instruction planning, curriculum mapping, and standards-based assessment
- Modules work independently, but feed seamlessly into the next
- Real-time formative assessment data
- Supports differentiated instruction that improves student performance

Curriculum Improvement Studio is made up of three programs!

①

INSTRUCTION PLANNER™

A System for Planning, Monitoring, and Analyzing Instruction

Instruction Planner makes it easier for teachers to plan and archive their units of instruction, correlate them to local and state standards, and then track what was actually taught in their classrooms. There is no other lesson planning tool to accurately capture what was planned and what was really taught.

②

CURRICULUM MAPPER®

A System For Planning, Monitoring, and Analyzing Curriculum

Curriculum Mapper is more than an alignment tool—it is a robust reporting and diagnostic program that uses real-time data to identify specific needs for improving curriculum, instruction, and assessment.

③

STANDARDSSCORE™

A System for Analyzing Student Mastery of the Enacted Curriculum

StandardsScore transforms grading activity into real-time assessment data to drive differentiated instruction, tiered intervention, and more effective teaching practices.

get more info on our website!
www.clhome.com



not to brag but...

OUR SOLUTIONS ARE PROVEN BY RESEARCH

The latest research shows that aligning curriculum to state and local standards—and ensuring the fidelity of instruction—is the key to student achievement.

Our solutions are directly aligned to the research of Jacobs, Marzano, and the National Science Foundation's findings on the impact of the alignment of instruction using enacted curriculum data, as well as with the related works of the Council of Chief State School Officers (CCSSO) and researchers Blank, Porter, Smithson, and Nunnaley.

The relationship between curriculum and instruction is critical to the success of a school and the achievement of its students.

Professional Development Services

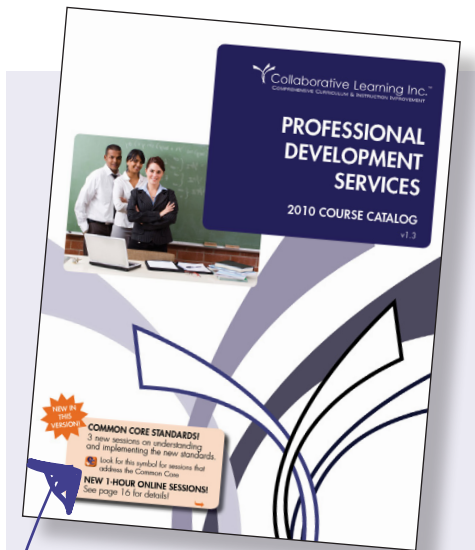
A highly-experienced team of experts partner with schools and districts to implement customized curriculum improvement programs to achieve your goals. Our consultants are all former educators with extensive experience in curriculum, mapping, and assessment. They have worked extensively in the state of Indiana. Flexible onsite and online resources support your needs and work within your budget.

We have the broadest, deepest catalog of professional development courses on instructional planning, explaining the standards, and curriculum alignment and improvement. All of which can include transitioning to the Common Core State Standards.

Take advantage of our free Webinars designed for school and district leaders who want to successfully implement curriculum improvement, curriculum mapping, or standards-based assessment.

View the current calendar at www.clihome.com/events.

View our Professional Development Catalog at www.clihome.com/pdf/CLI-PD-Catalog-e.pdf



Professional Development Catalog

What's Inside:

- Over 50 full- and half-day sessions on Curriculum, Instruction, and Assessments
- Newly-added sessions on understanding and implementing Common Core State Standards
- Information about our free Webinar series
- Just introduced! New 1-hour online sessions
- Sessions that are completely customizable!

Did you notice?

We feature over 15 sessions that address the Common Core State Standards



A Note from Kristy

These packages specifically meet the unique needs of Indiana educators. Take a moment to have a look... if any questions arise, or you would like to inquire about pricing, feel free to email or call me!

-Kristy

kristyc@clihome.com
630.282.1635

INDIANA STATE MAPS ALIGNMENT & CURRICULUM ANALYSIS

12-month process | 30-teacher Package

A 12-month process to analyze curriculum, understand Common Core State Standards, and implement classroom-based instructional planning aligned to Common Core State Standards and Goals.

We begin with leadership consulting to get your team "on the same page," including training on Understanding the Common Core State Standards and the Indiana State Maps, providing assistance with Curriculum Analysis, and deploying job-embedded software supports.

INCLUDES:

- Access to Indiana State Maps
- 12-month Access to Curriculum Mapper® and Instruction Planner™
- 36 hours of onsite or web-based professional development
- Survey and Data Review with Leadership

Professional Development Course Overview

- Understanding the Indiana State Maps and How They Support Common Core State Standards
- Understanding the Common Core State Standards and Aligning Instruction to Goals
- Using Curriculum, Classroom, and Instruction Data to Drive Improvement
- Curriculum Analysis and Aligning Curriculum Maps
- Classroom Tools: Instruction Planning and Curriculum Mapping

SUPPORTING HIGHLY QUALIFIED TEACHERS

12-month process | 30-teacher Package

A 12-month process, beginning with leadership development in Best Practices for Supporting and Developing Highly Qualified Teachers (HQT) with Job-embedded Classroom Instruction Tools. Includes Understanding Standards & Goals for staff who may be confused about their meanings and impact, job-embedded software supports, and ongoing coaching and professional development to drive Successful Teachers and Classrooms!

INCLUDES:

- Access to Indiana State Maps
- 12-month Access to Curriculum Mapper® and Instruction Planner™
- 42 hours of Professional Development
- Training Support and Materials CD
- Survey and Data Review with Leadership

Professional Development Course Overview

- Leadership Seminar - Getting Started by Defining Success and HQT
- Understanding Standards and Aligning Classrooms to Goals
- Using the Indiana State Maps to Guide Instructional Planning
- Using Instruction and Student Data to Drive Improvement
- Classroom Tools: Instruction Planning and Curriculum Mapping

It's About the Fidelity of Implementation...

Used by thousands of schools and over 100,000 educators, Collaborative Learning assures successful implementation of our programs for every school, using a team of professional development consultants who are experts in curriculum, mapping, instructional planning, and assessment. By combining teaching and consulting experience in Indiana with highly-valued academic and real-world classroom perceptions, we support you reaching your achievement goals.



Allow us to introduce your team...

Your team of experts is ready and waiting to serve Indiana Schools. Meet your team members and partners in education below!

Collaborative Learning Representatives

Kristy Casiello has been assisting educators on their curriculum improvement efforts for the past 10 years. She is excited to be leading the effort to bring Indiana educators the most effective curriculum improvement tools available.



Kristin Morgan, Senior Account Manager, comes to Collaborative Learning Inc. with a Bachelor's Degree from Eastern Illinois University. Kristin has been working directly with our Regional Directors to ensure that district needs are met quickly and effectively. She works with our professional development team, assisting in the areas of training, standards-based grading, and curriculum mapping.

Curriculum Improvement Institute Representatives available through the National Partnership for School Leadership Development

Michael Rush has served schools for more than 30 years as both a teacher and consultant. He has worked closely with expert educators, including Heidi Hayes Jacobs. He has traveled extensively, helping school leaders better understand the operational curricula within their schools. Mr. Rush is experienced in Understanding by Design, Differentiated Instruction, and Project-Based Learning.



Leslie Noonan has worked full-time at Collaborative Learning Inc. since 2005, having joined the company as a certified consultant in 2003. She has developed and presented a variety of curriculum and technology workshops for K-12 audiences across the United States. She served as a facilitator for the Buddy System Project, a statewide program funded by grants from the Indiana Department of Education.

Janet Rummel is a 13-year veteran teacher who brings experience in leading instruction planning, curriculum mapping, and standards-based grading initiatives within her district and in districts nation-wide. A doctoral candidate in Curriculum and Instruction at Purdue University, she also coordinates and teaches multicultural education to prospective teachers and supervises student teachers of secondary mathematics.



Have you participated in our weekly Webinars?

Collaborative Learning presents a variety of online Webinars each week designed for school and district leaders who are interested in learning more about curriculum, instruction, and assessment improvement. We present the latest trends, research, and issues that face educators on a daily basis.

Go to www.clhome.com/events to see our full schedule!

Check out the website today for a complete listing of webinars!



Collaborative Learning Inc, founded in 1999, is the leading company in productivity software enabling schools to plan, monitor, and analyze instruction and curriculum with benchmarks and standards.

Research has shown that the variance in student learning is directly related to curriculum and instruction that is aligned, or misaligned, to desired outcomes and standards. We strive to produce programs that provide quality tools necessary to the critical decisions that improve student performance, making schools, teachers, students, and communities more successful.

“Collaborative Learning provides tools which give teachers immediate actionable information. Teachers are successful and feel successful. I highly recommend the tools that Collaborative Learning provides.”

— **Jane E. Pollock**, Author *Classroom Instruction that Works*
and *Improving Student Learning One Principal at a Time*

Get in Touch!

📞 630.282.1635

🌐 www.clihome.com

✉️ kristyc@clihome.com